



**BEAUCHAMP  
ESTATES**

# Prince Of Wales Terrace

KENSINGTON





## Second-floor apartment in Kensington's Prince of Wales Terrace.

 2  2

## Exterior

Set within a stucco-fronted period building, the property includes a Juliette balcony and benefits from its position on a well-regarded residential terrace. On-street parking is available via paid permit, and the building's setting places it close to established green spaces and formal gardens.

## Highlights

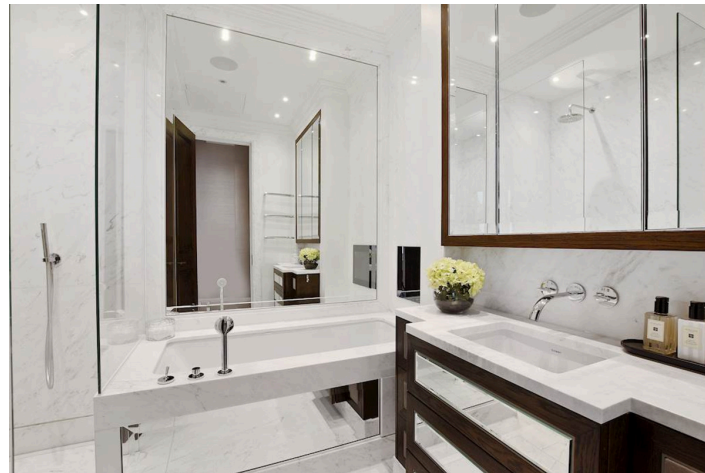
- Period features throughout
- Balcony
- High Ceilings





## Interiors

The apartment is arranged laterally with a focus on open-plan living, combining reception and dining space with a fitted kitchen finished with Miele appliances and a Quooker tap. High ceilings and retained period detailing are consistent throughout, balanced with integrated modern technology including Samsung Smart TVs and Sonos soundbars. Both principal rooms are configured with en suite facilities and built-in storage, alongside a separate guest WC.

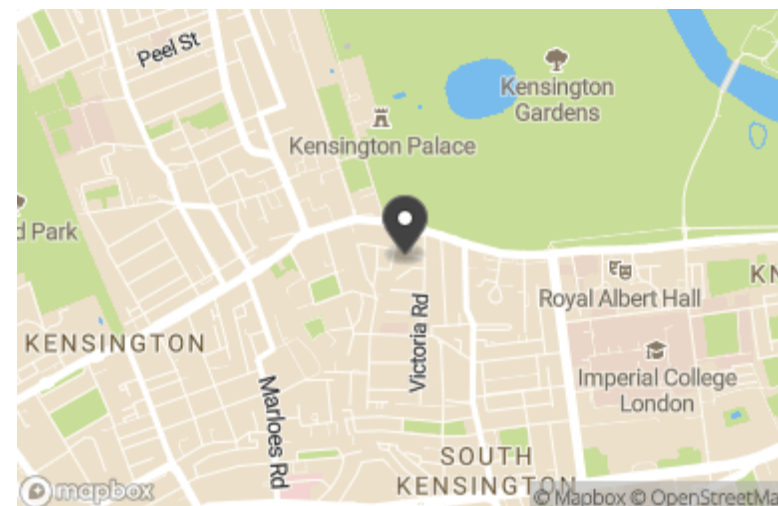


## Features

- Air Conditioning
- Furnished

## Location

Prince of Wales Terrace sits between Kensington Palace Gardens and Hyde Park, providing immediate access to open space as well as cultural and seasonal events. Kensington High Street is within walking distance, offering a mix of retail and dining. High Street Kensington Underground Station (Circle and District lines) is approximately five minutes away, providing direct routes towards Westminster, Sloane Square and the wider network.



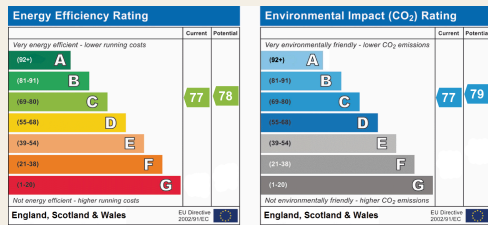
# Terms

Price: £2,785 per week

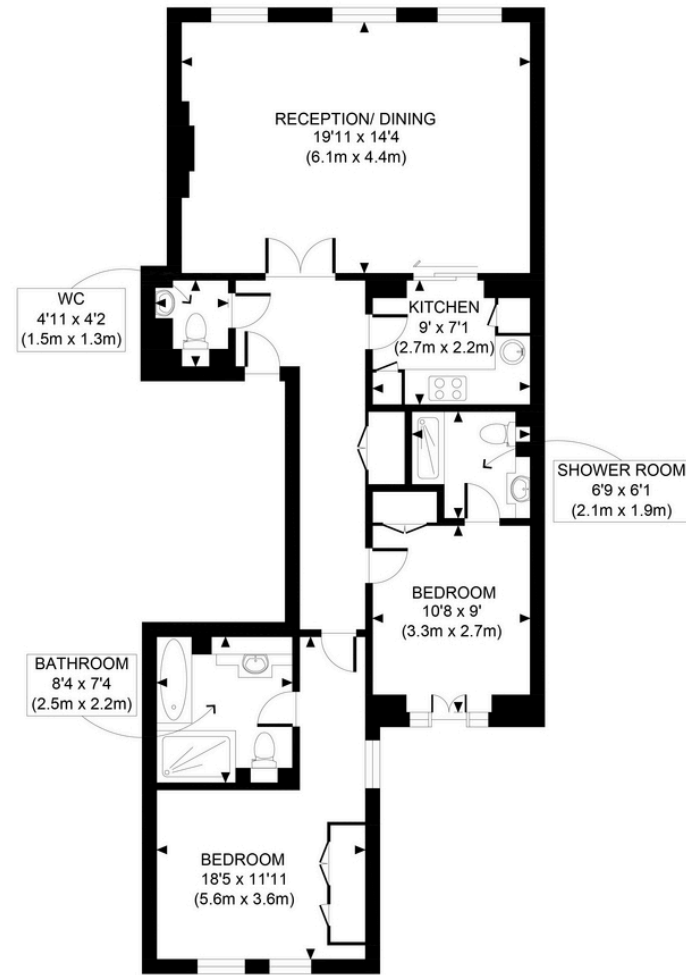
Tenure:

Local Authority: Kensington & Chelsea

Council Tax: G



Beauchamp Estates, their clients and any joint agents give notice that: 1. They are not authorised to make or give any representation or warranties in relation to the property either here or elsewhere, either on their own behalf or on behalf of their client or otherwise. They assume no responsibility for any statement that may be made in these particulars. These particulars do not form part of any offer or contract and must not be relied upon as statements or representations of fact. 2. Any Areas, measurements or distances are approximate. The text photographs and plans are for guidance only and are not necessarily comprehensive. It should not be assumed that the property has all necessary planning, building regulation or other consents and Beauchamp Estates have not tested any services, equipment or facilities. Purchasers must satisfy themselves by inspection or otherwise.



SECOND FLOOR  
GROSS INTERNAL  
FLOOR AREA 862 SQ FT



<b>APPROX. GROSS INTERNAL FLOOR AREA 862 SQ FT / 80 SQM</b>		Flat 8, 21-22	
Disclaimer: Floor plan measurements are approximate and are for illustrative purposes only. While we do not doubt the floor plan accuracy and completeness, you or your advisors should conduct a careful, independent investigation of the property in respect of monetary valuation		date	05/12/24



**BEAUCHAMP  
ESTATES**

Beauchamp Estates - Mayfair

24 Curzon Street,  
London, W1J 7TF

020 7499 7722

[londoninformation@beauchampestates.com](mailto:londoninformation@beauchampestates.com)

[www.beauchampestates.com](http://www.beauchampestates.com)