



**BEAUCHAMP
ESTATES**

Charles Street

MAYFAIR





Apartment with wraparound balcony and links to James Bond.



Exterior

The property forms part of a Grade II listed period building dating from circa 1905, where it was formerly known as The Portland Club, frequented by 007 author Ian Fleming and the inspiration for James Bond's Blades club in the Bond novels and movies. The apartment has now been beautifully refurbished to an exceptional standard throughout by award-winning architectural practice TW-2 and luxury contractor-developer Sons & Co. Positioned on Charles Street, this property is in the heart of Mayfair

Highlights

- Day Porter
- High Ceilings
- Wood Flooring
- Air Conditioning
- Lateral Apartment
- Lift access





Interiors

This laterally arranged first floor apartment extends to approximately 2,404 sq ft and occupies a principal floor within the building. The main reception room features high ceilings and opens onto a wraparound balcony, providing continuous natural light and external access along the length of the apartment. The layout includes multiple bedrooms, a separate kitchen and utility space, with lift access, a combination rarely found within prime Mayfair.



Features

- Air Conditioning
- Porter

Location

Charles Street is located in the heart of Mayfair, close to Berkeley Square. The area offers access to established retail, dining and green spaces including Green Park and Hyde Park. Underground services are available at Green Park, Hyde Park Corner and Bond Street.



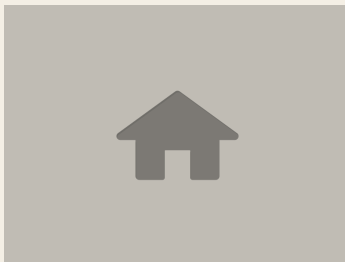
Terms

Price: £7,500 per week

Tenure:

Local Authority: Westminster

Council Tax: G

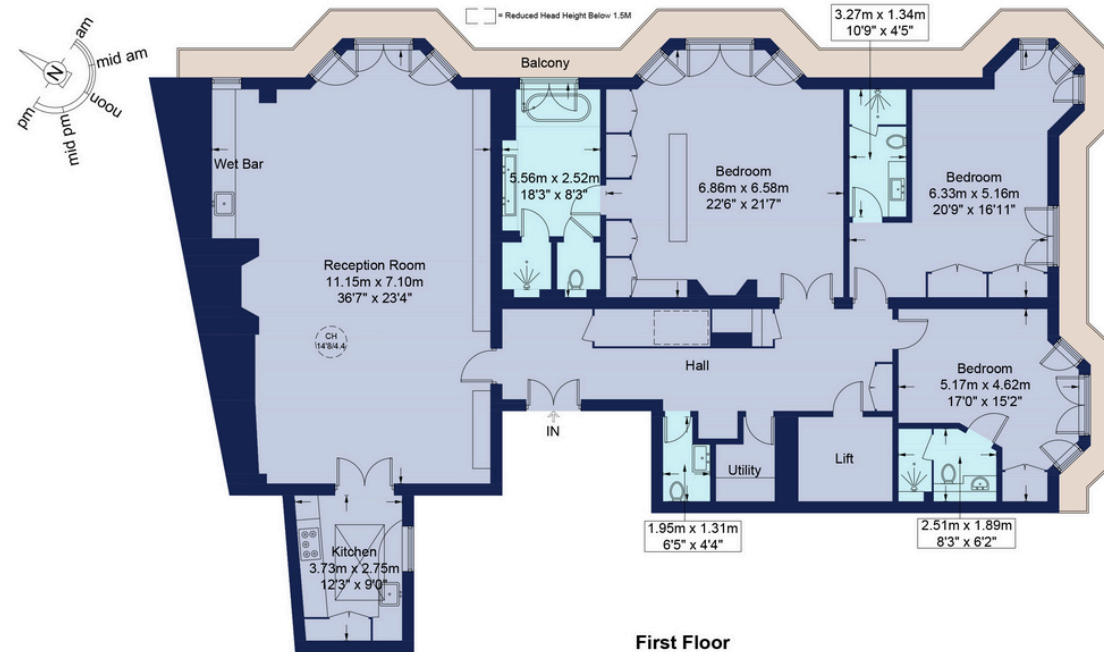


Beauchamp Estates, their clients and any joint agents give notice that: 1. They are not authorised to make or give any representation or warranties in relation to the property either here or elsewhere, either on their own behalf or on behalf of their client or otherwise. They assume no responsibility for any statement that may be made in these particulars. These particulars do not form part of any offer or contract and must not be relied upon as statements or representations of fact. 2. Any Areas, measurements or distances are approximate. The text photographs and plans are for guidance only and are not necessarily comprehensive. It should not be assumed that the property has all necessary planning, building regulation or other consents and Beauchamp Estates have not tested any services, equipment or facilities. Purchasers must satisfy themselves by inspection or otherwise.

Charles Street, W1J

Approximate Gross Internal Area = 2404 sq ft / 223.3 sq m

Restricted Height = 14 sq ft / 1.3 sq m



This plan is for layout guidance only and is not drawn to scale unless stated. All dimensions, including windows, doors, and the Total Gross Internal Area (GIA), are approximate. For precise measurements, please consult a qualified architect or surveyor before making any decisions based on this plan.





**BEAUCHAMP
ESTATES**

Beauchamp Estates - Mayfair

24 Curzon Street,
London, W1J 7TF

020 7499 7722

londoninformation@beauchampestates.com

www.beauchampestates.com