

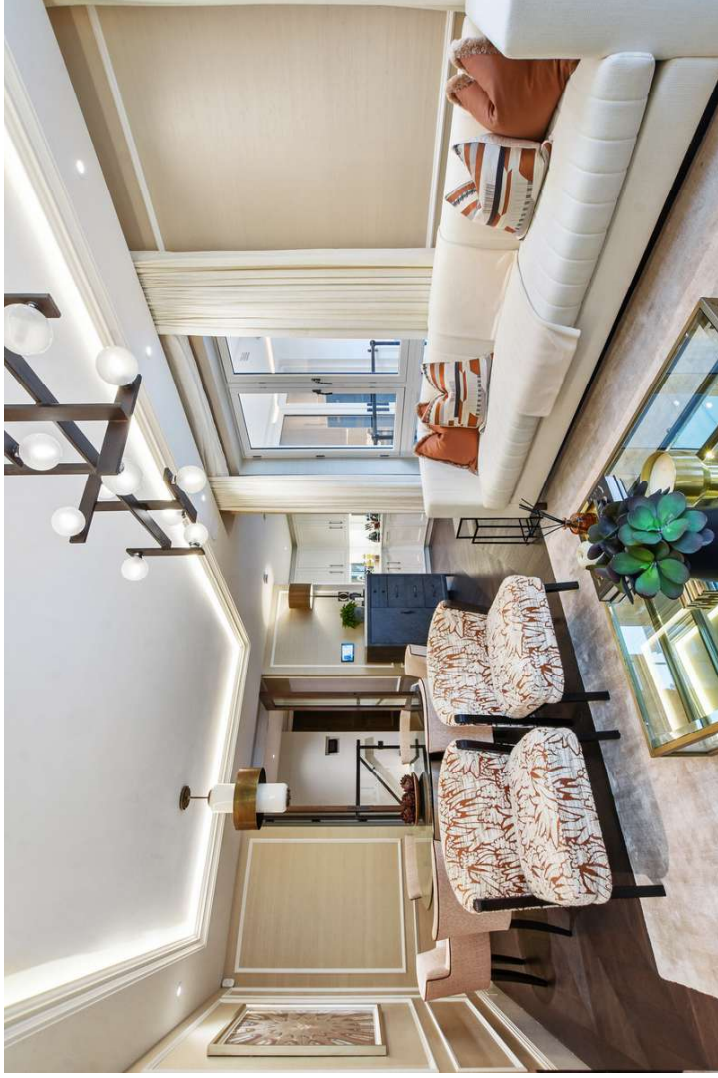





**BEAUCHAMP
ESTATES**

Prince Of Wales Terrace

KENSINGTON





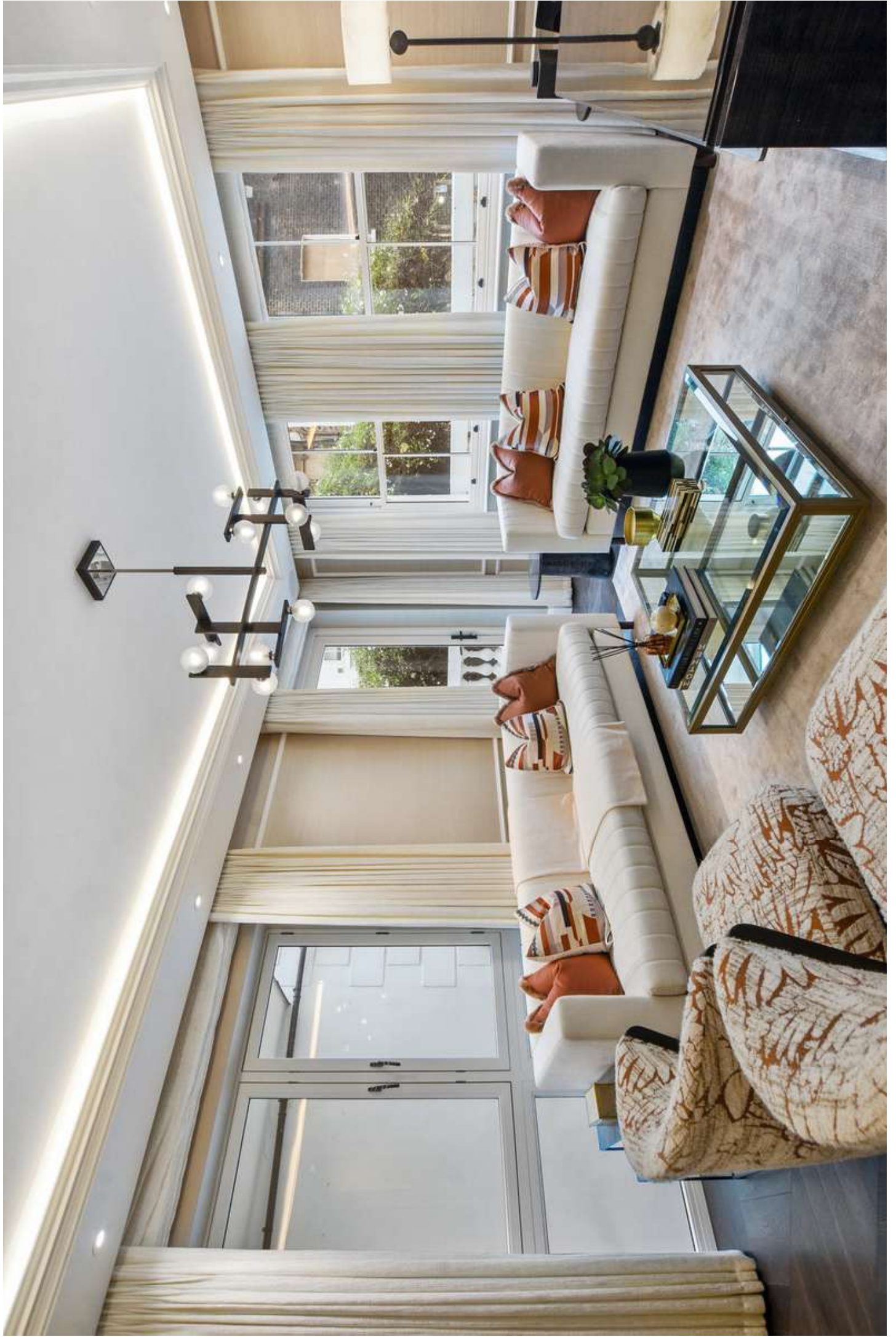
An exceptional three-
 bedroom apartment with
 outside space, set within this
 brand new boutique  3  3  . . .

Exterior

The property includes a private courtyard terrace accessed via French doors, creating a sheltered outdoor space directly connected to the living area. A Juliet balcony enhances natural ventilation and light. On-street permit parking is available, and the building sits within a well-established residential terrace close to Hyde Park.

Highlights

- Juliet Balcony
- Bespoke kitchen cabinetry
- High ceilings and large windows throughout

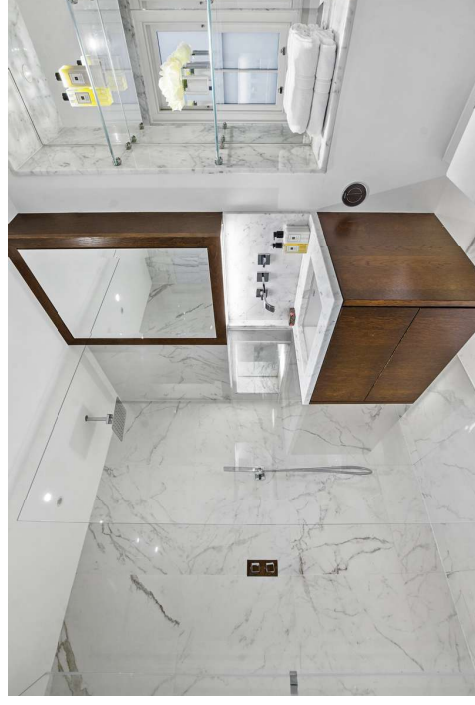


Interiors

The ground floor is arranged around an open-plan reception and dining area with high ceilings, large windows and oak parquet flooring, allowing for strong natural light throughout. The kitchen is fitted with marble worktops, Miele appliances, a wine fridge and bespoke cabinetry, with direct access to the terrace. The lower ground floor provides a quieter, more private level, where each bedroom has its own ensuite finished in marble, maintaining consistency in materials and detailing across the apartment.

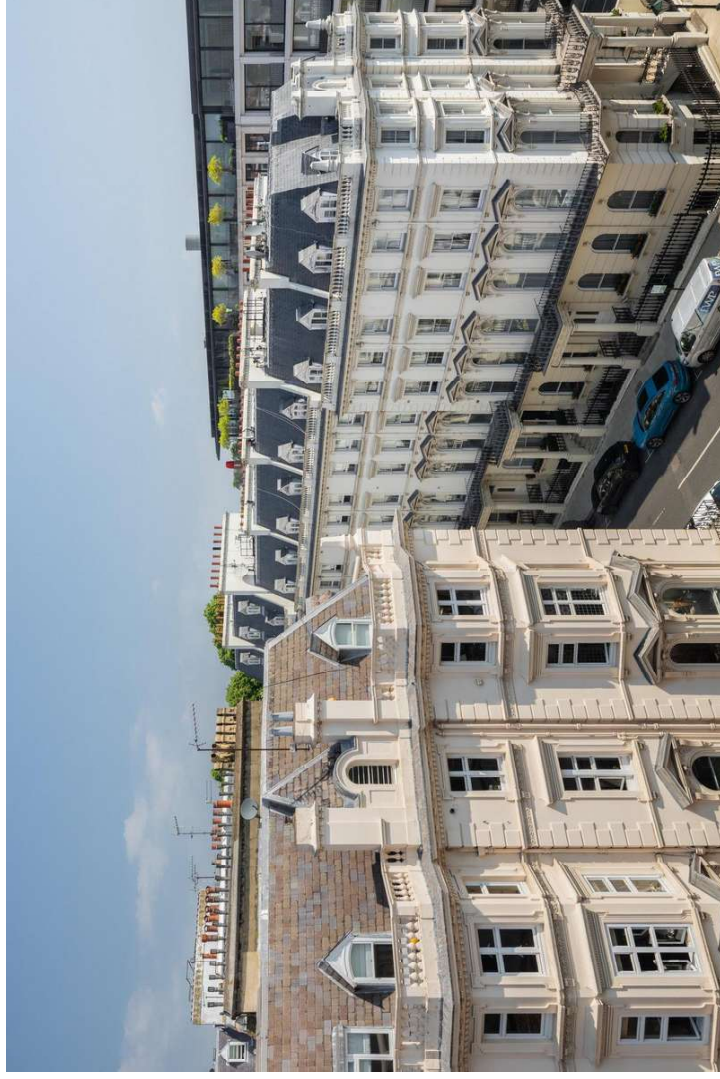
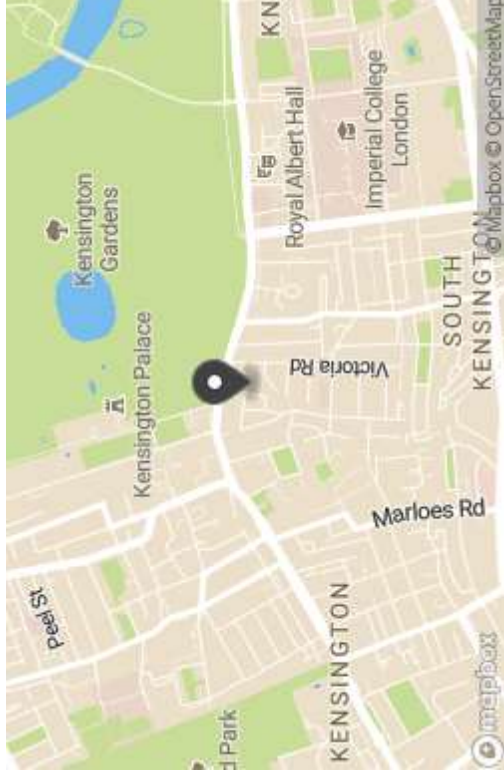
Features

- Air Conditioning
- On Street Parking
- Private Terrace



Location

Prince of Wales Terrace is positioned just off Hyde Park, providing immediate access to open green space. The address is within walking distance of The Royal Albert Hall, the Natural History Museum and the V&A, as well as a wide selection of restaurants and retail along Kensington High Street. Gloucester Road and High Street Kensington stations offer Underground connections, supporting access across central London.



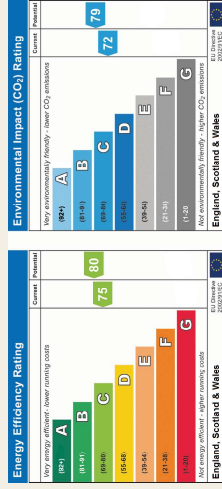
Terms

Price: £3,865 per week

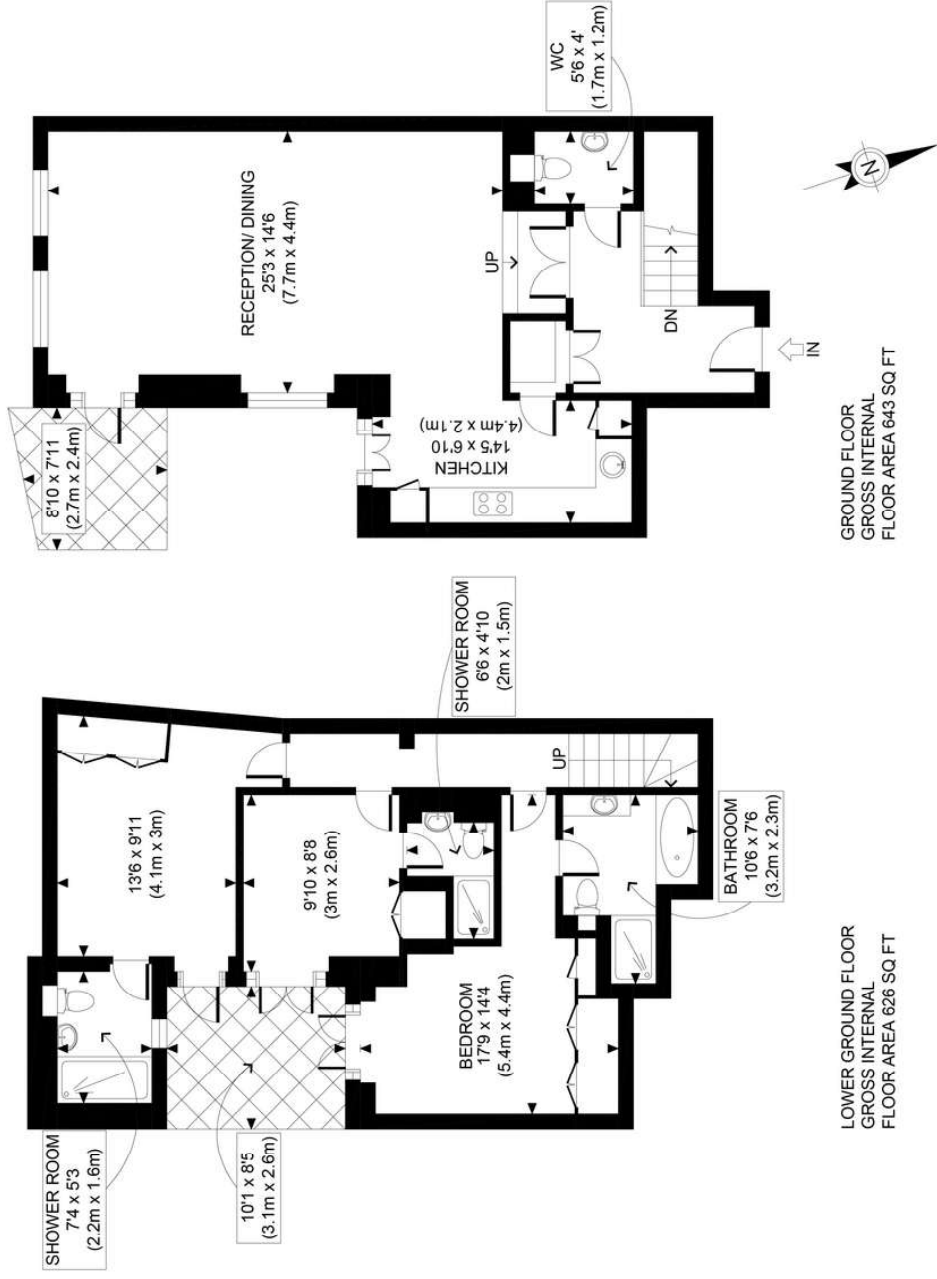
Tenure:

Local Authority: Kensington & Chelsea

Council Tax: G



Beauchamp Estates, their clients and any joint agents give notice that: 1. They are not authorised to make or give any representation or warranties in relation to the property either here or elsewhere, either on their own behalf or on behalf of their client or otherwise. They assume no responsibility for any statement that may be made in these particulars. These particulars do not form part of any offer or contract and must not be relied upon as statements or representations of fact. 2. Any Areas, measurements or distances are approximate. The text, photographs and plans are for guidance only and are not necessarily comprehensive. It should not be assumed that the property has all necessary planning, building regulation or other consents and Beauchamp Estates have not tested any services, equipment or facilities. Purchasers must satisfy themselves by inspection or otherwise.



LOWER GROUND FLOOR
GROSS INTERNAL
FLOOR AREA 626 SQ FT

GROUND FLOOR
GROSS INTERNAL
FLOOR AREA 643 SQ FT

| | |
|--|---------------|
| APPROX. GROSS INTERNAL FLOOR AREA 1269 SQ FT / 118 SQM | |
| Disclaimers: Floor plan measurements are approximate and are for illustrative purposes only. While we do not doubt the floor plan accuracy and completeness, you or your advisors should conduct a careful, independent investigation of the property in respect of monetary valuation | |
| Flat 4, 21-22 | date 06/12/24 |
| photoplan | |



**BEAUCHAMP
ESTATES**

Beauchamp Estates - Mayfair

24 Curzon Street,
London, W1J 7TF

020 7499 7722

londoninformation@beauchampestates.com

www.beauchampestates.com