

Europa House

LIVING ROOMS
THE HOTEL ALTERNATIVE

**FOUR BEDROOM, FOUR BATHROOM PENTHOUSE
WITH STUDY, AND WRAP-AROUND TERRACES
2,320 SQ FT / 215.5 SQ M**

79A RANDOLPH AVENUE W9 1DW, LITTLE VENICE

ABOUT THE APARTMENT

This exquisite 4-bedroom, 4-bathroom penthouse is a rare gem. Fully air conditioned with private lift access encompassing an impressive 2,320 square feet (215.5 square meters) of elegantly designed living space, this residence provides the ultimate in modern sophistication. The apartment boasts spacious wrap-around terraces, which offer views of the stunning 3 acres of award-winning private gardens. These outdoor spaces create a serene retreat, perfect for entertaining guests or relaxing in the sun. At the heart of the apartment lies a large, open-plan living and dining area, designed with both style and comfort in mind with bespoke sofas and vintage handwoven Moroccan rugs. Each of the four generously proportioned bedrooms has been meticulously designed, offering ample space, luxurious finishes, and an abundance of natural light.

[TAKE THE VIDEO TOUR](#)

THE SPACE

OUTDOOR SPACE: Planted, Decked Terrace with Outdoor Seating

LIVING ROOM: Dining Table Seating 8, Two 4 Seater Sofas, Vintage Handwoven Moroccan Rug

BEDROOMS:

Master Bedroom -Ensuite with shower, Super King Bed, Access to a Private Terrace

2nd Bedroom - Ensuite with bath and shower combination, Super King Bed. Access to a Private Terrace

3rd Bedroom - King Bed

4th Bedroom - Double Bed

BATHROOMS:

Master Bedroom Ensuite - Shower

Second Bedroom Ensuite - Bath and Shower Combination

Third Bathroom - Walk in Shower

Fourth Bathroom - Bath and Shower Combination

STUDY: Work Desk

OUR SERVICES & INCLUSIONS

All Utilities and Council Tax

Dedicated 24hr Concierge

Twice Weekly Housekeeping Service with Linen Change

Underground Parking

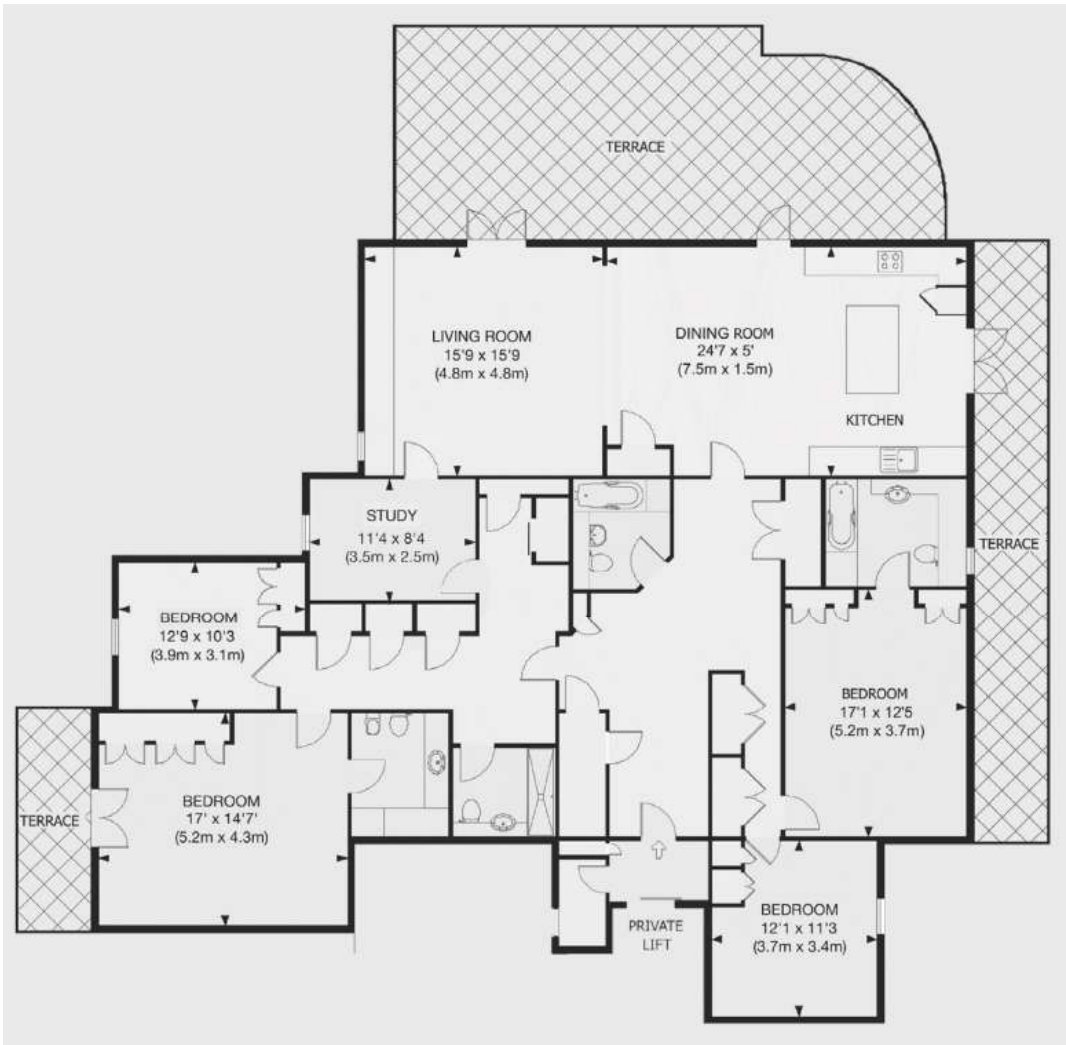
Onsite Maintenance

Complimentary High-Speed Wi-Fi

Seperate Washer Dryer

Ample Storage

Fully Equipped Modern Kitchen



**FOUR BEDROOM, FOUR BATHROOM
PENTHOUSE WITH STUDY, AND
WRAP-AROUND TERRACES**
2,320 SQ FT / 215.5 SQ M



























CLEAN YOUR HANDS
VOTARY
HAND WASH
SANTALWOOD AND CASHI
WITH VITAMIN E COMPLEX

HYDRATE YOUR BODY
VOTARY
HAND & BODY MILK
SANTALWOOD AND CASHI
WITH VITAMIN E COMPLEX





THE NEIGHBOURHOOD

One of London's best-kept secrets, Little Venice is a favourite of those in the know. It's a handsome, family oriented neighbourhood, where stylish cafés and chic boutiques sit beside traditional butchers and greengrocers

LOCATION

5 Minutes Walk to Maida Vale Village
5 Minutes Drive to Lords Cricket Ground
10 Minutes Walk to Abbey Road Studios
20 Minutes Walk to Portobello Road

TRANSPORT LINKS

5 Minutes to Maida Vale and Warwick Ave Underground Station – Bakerloo Line
10 Minutes to Paddington Station

GROCERY SHOPS

5 Minutes to local deli, green grocer and butcher on Clifton Road

