



**BEAUCHAMP
ESTATES**

Whitehall Place

WHITEHALL





Lateral apartment situated within the Corinthia Residences.



Exterior

A modern two bedroom apartment within a unique collection of private residences. Known as London's 21st Century Grand Hotel, featuring cutting-edge technology and contemporary design. Residents at The Corinthia have access to London's leading hotel spa, and two restaurants led by multi-Michelin-starred Chef Garry Hollihead.

Highlights

- Bar Area
- Wine Cellar
- 24-Hour Room Service
- Leisure Facilities
- Michelin Star Restaurants





Interiors

A sophisticated two-bedroom apartment offering ample space and uncompromising quality, positioned on the first floor. Designed for elegant living and entertaining, the Corinthia features home automation, enabling you to arrange lighting, heating, audio, and window blinds to be controlled remotely. This property benefits from a spacious open-plan reception room seamlessly flowing into the dining room. Down the hall wall features a kitchen and two bedrooms both with ensuites, as well as a guest toilet. The Corinthia Residences provides spectacular city views and allows access to the adjoining Corinthia Hotel where 24-hour bespoke services are at hand.



Features

- 24/7 Concierge
- Underground Parking

Location

The Corinthia Apartments delivers an elite residence within a historic location. Perfectly positioned between St James's and Covent Garden, between Westminster and the West End, this impressive lateral residence offers an incomparable London living experience. With easy transport links from Embankment, Charing Cross and Westminster station as well as the River Thames a short walk away.



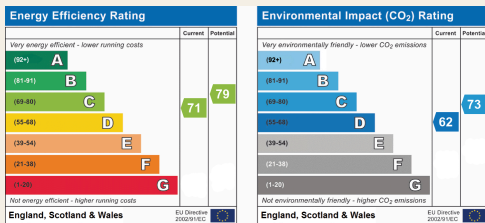
Terms

Price: £6,500 per week

Tenure:

Local Authority: Westminster

Council Tax: H



Beauchamp Estates, their clients and any joint agents give notice that: 1. They are not authorised to make or give any representation or warranties in relation to the property either here or elsewhere, either on their own behalf or on behalf of their client or otherwise. They assume no responsibility for any statement that may be made in these particulars. These particulars do not form part of any offer or contract and must not be relied upon as statements or representations of fact. 2. Any Areas, measurements or distances are approximate. The text photographs and plans are for guidance only and are not necessarily comprehensive. It should not be assumed that the property has all necessary planning, building regulation or other consents and Beauchamp Estates have not tested any services, equipment or facilities. Purchasers must satisfy themselves by inspection or otherwise.

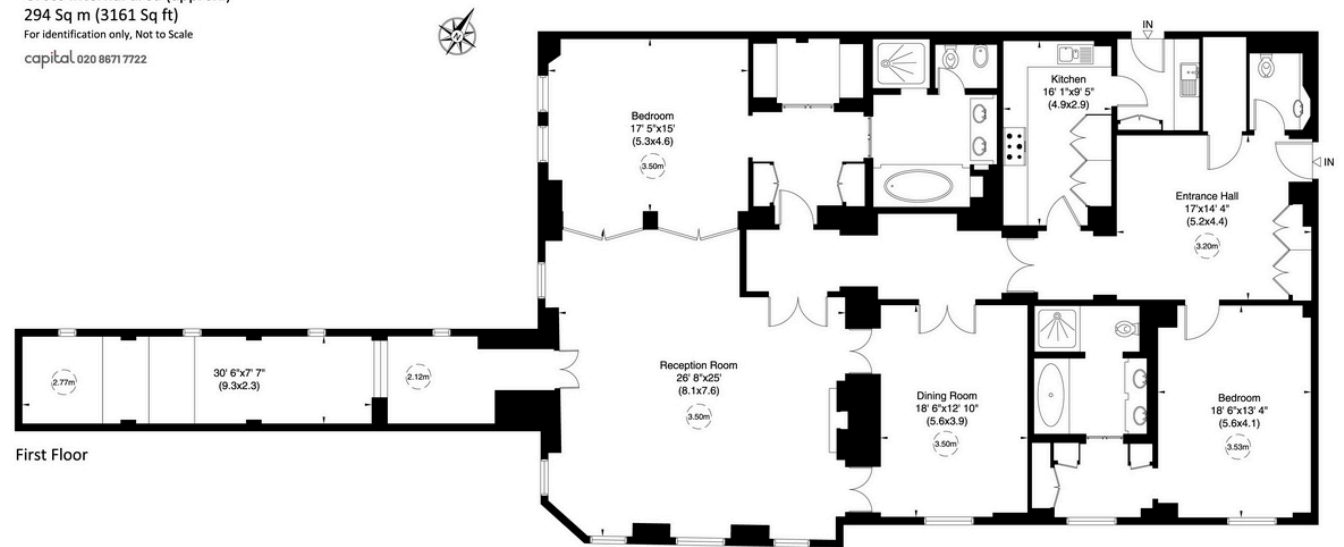
2 Corinthia Residence, 10 Whitehall Place, SW1

Gross internal area (approx.)

294 Sq m (3161 Sq ft)

For identification only, Not to Scale

capital 020 8871 7722



First Floor

Not to scale, for guidance only and must not be relied upon as a statement of fact. All measurements and areas are approximate only (and have been prepared in accordance with the current edition of the RICS Code of Measuring Practice).



**BEAUCHAMP
ESTATES**

Beauchamp Estates - Mayfair

24 Curzon Street,
London, W1J 7TF

020 7499 7722

londoninformation@beauchampestates.com

www.beauchampestates.com