



**BEAUCHAMP
ESTATES**

JUNCTION MEWS
PADDINGTON





Charming mews house on cobbled Paddington cul-de-sac.

 2  1

Exterior

Positioned within an attractive cobbled mews in the heart of Paddington, the property forms part of a characterful setting comprising period houses, a former hayloft and warehouse. The house is arranged over two floors and includes a private patio, offering usable outdoor space within a quiet cul-de-sac environment. A garage further enhances practicality and is a valuable feature in this central location.

Highlights

- Private patio
- Cobbled mews setting
- Quiet cul-de-sac position
- Bright natural light
- Scope for modernisation





Interior

The accommodation includes two bedrooms, a study area and one bathroom, arranged across two floors. The ground floor incorporates an open plan kitchen and living space, benefitting from good natural light. The property offers good storage throughout and is held on a freehold basis. It is presented in need of modernisation, providing scope for refurbishment and the opportunity to reconfigure or update to suit individual requirements.

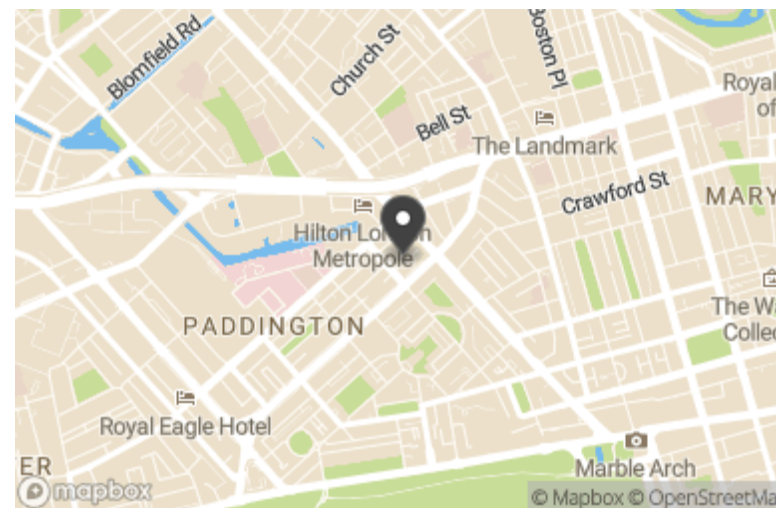


Features

- Garage

Location

Junction Mews is set in Paddington, a two minute walk from Paddington Basin with its canal-side restaurants and waterside walks. The shops, cafés and everyday amenities of Edgware Road and Praed Street are close by, while Hyde Park and Connaught Village are around a 10 minute walk away. Paddington Station is nearby, providing Underground access via the Bakerloo, Circle, District and Hammersmith & City lines, alongside national rail services, the Elizabeth line and the Heathrow Express, placing the West End, the City and Heathrow within easy reach, with Notting Hill, Marylebone and Oxford Street also within close reach.



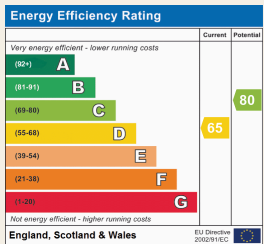
Terms

Price: £1,950,000

Tenure: Freehold

Local Authority: Westminster

Council Tax Band: G

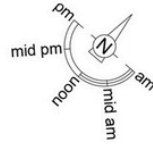


Beauchamp Estates, their clients and any joint agents give notice that: 1, They are not authorised to make or give any representation or warranties in relation to the property either here or elsewhere, either on their own behalf or on behalf of their client or otherwise. They assume no responsibility for any statement that may be made in these particulars. These particulars do not form part of any offer or contract and must not be relied upon as statements or representations of fact. 2. Any Areas, measurements or distances are approximate. The text photographs and plans are for guidance only and are not necessarily comprehensive. It should not be assumed that the property has all necessary planning, building regulation or other consents and Beauchamp Estates have not tested any services, equipment or facilities. Purchasers must satisfy themselves by inspection or otherwise.

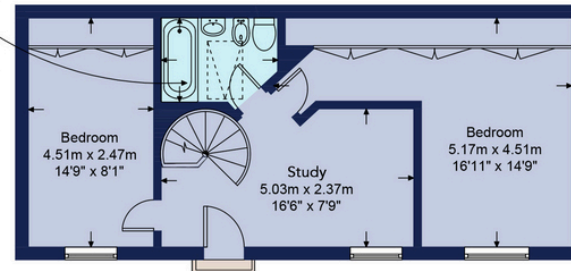
Junction Mews, W2

Approximate Gross Internal Area = 1040 sq ft / 96.64 sq m
(Including Garage)

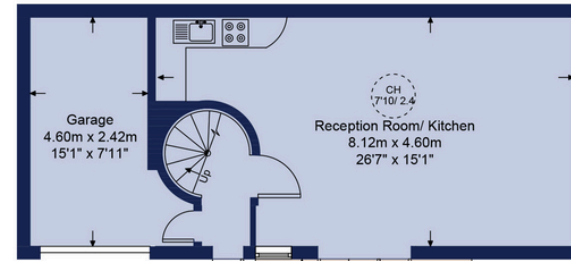
Garage = 124 sq ft / 11.50 sq m



Bathroom
2.29m x 1.70m
7'6" x 5'6"



First Floor



Patio
4.26m x 1.20m
13'11" x 3'11"

Ground Floor



This plan is for layout guidance only and is not drawn to scale unless stated. All dimensions, including windows, doors, and the Total Gross Internal Area (GIA), are approximate. For precise measurements, please consult a qualified architect or surveyor before making any decisions based on this plan.





**BEAUCHAMP
ESTATES**

Beauchamps Estates - St Johns Wood

80 St Johns Wood High Street,
London, NW8 7SH

020 7722 9793

sjw@beauchampestates.com

www.beauchampestates.com