



# Rede Place

NOTTING HILL W2

# CONTENTS

---

Accommodation

Upper Floors

Lower Floors

Floorplan

Location

Terms



## WELCOME TO REDE PLACE

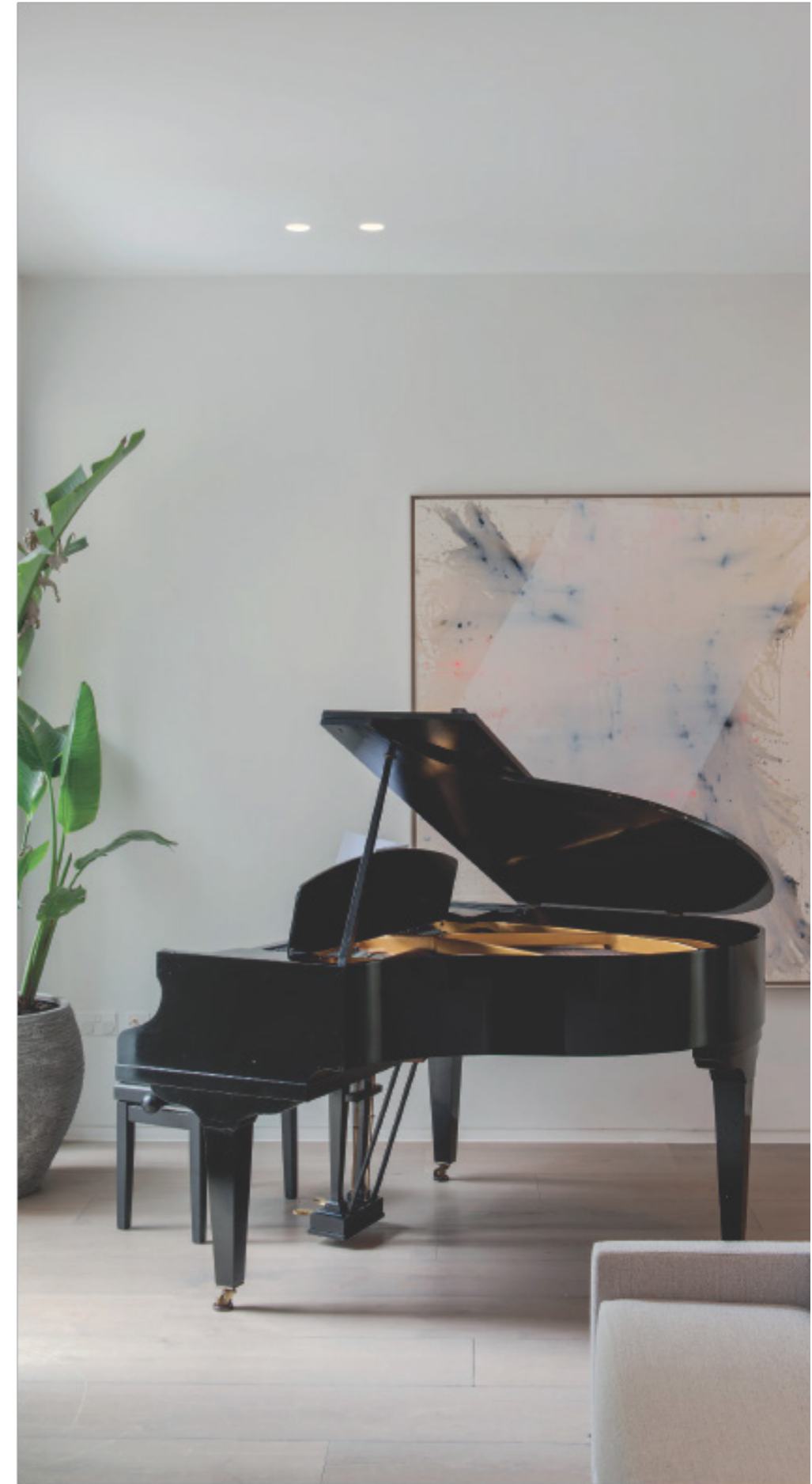
### ACCOMMODATION

An exquisite, contemporary home with a clear prominence of design and style. The open plan living area is the heart of this home with three designated areas for relaxing, eating and cooking. There is a continuity of style throughout the home which is strikingly present in this open space. Large, thin framed doors draw you through the home to the enclosed garden which provides a tranquil outside space which reflects the calm interiors.

There is an immaculate attention to detail throughout the home from the bespoke chandeliers to the pocket doors which fold away to reveal a secret bar. The space is accented by a grand piano, artwork, and contemporary soft furnishings.











## UPPER FLOORS

The first floor is presented as immaculately as the ground with contemporary design and exceptional finishings throughout. The principal bedroom suite benefits from high ceilings, a spectacular ensuite with a skylight over the shower and a dressing room. Additionally, large sliding doors overlook the garden below. There are a further three bedrooms on the first floor all with ensuite bathrooms. An additional bedroom with ensuite toilet and study are located on the second floor.

The home also presents a separate studio flat accessed from the front of the home via a private, separate entrance.

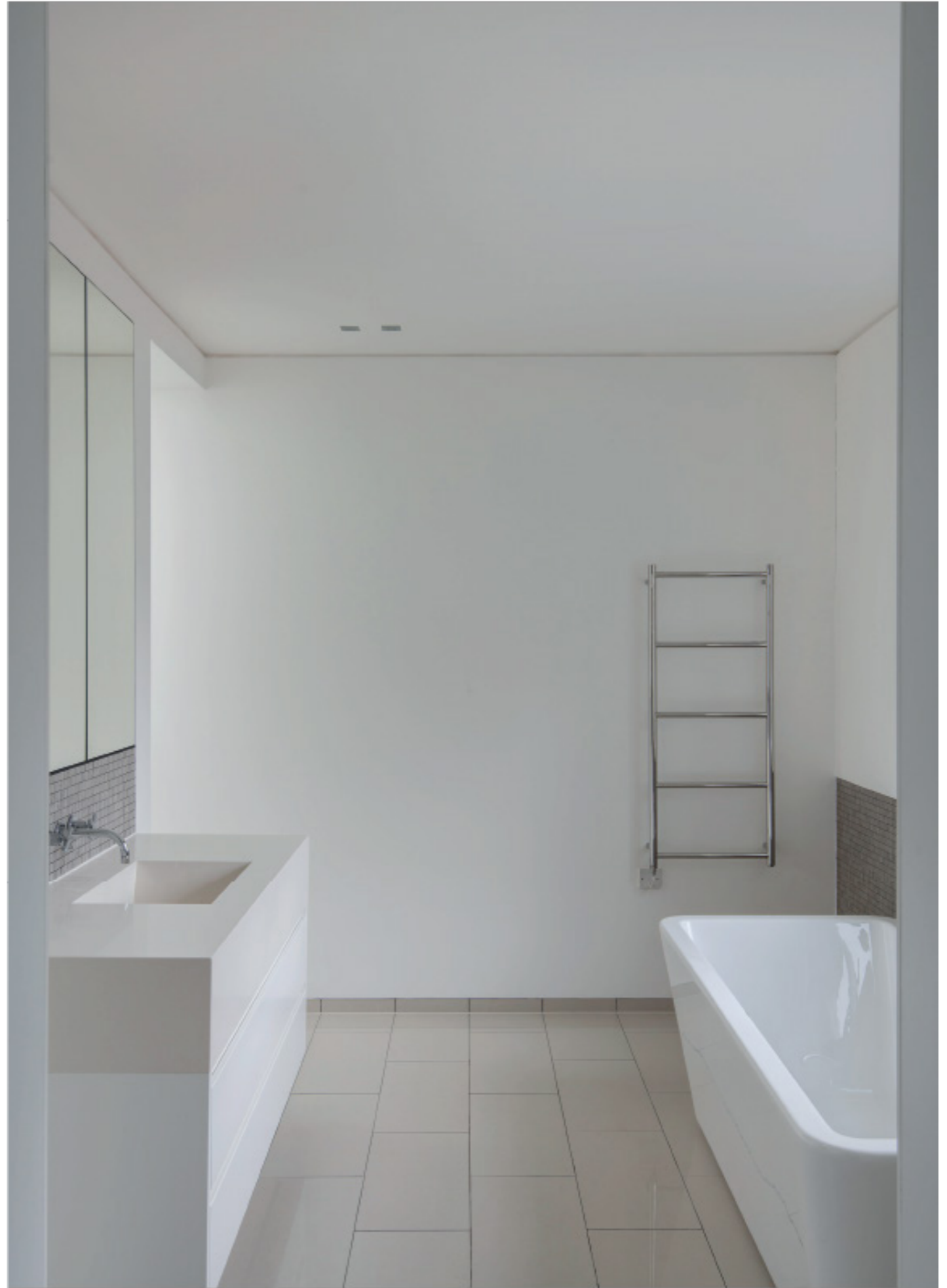


An architectural staircase is the spine of the home with dramatic curves lit by an overhead skylight.

The staircase connects the four principal floors of the home with a second stair case leading to the top floor.









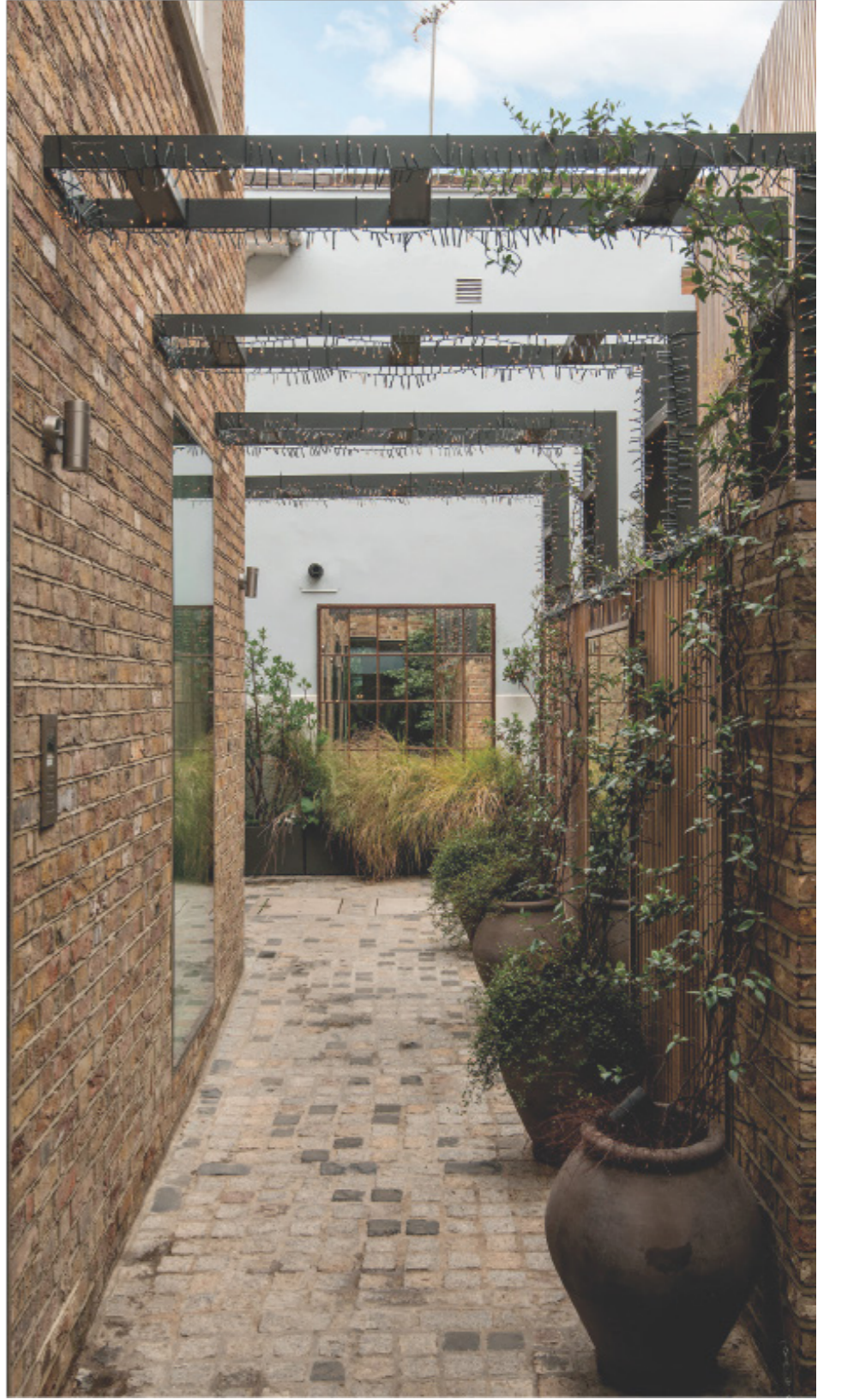


LOWER FLOORS

Rede Place presents two levels of state-of-the-art entertainment featuring a large living area with a fully equipped bar, perfect for entertaining, a cinema room, a games room, a gym, swimming pool and sauna.

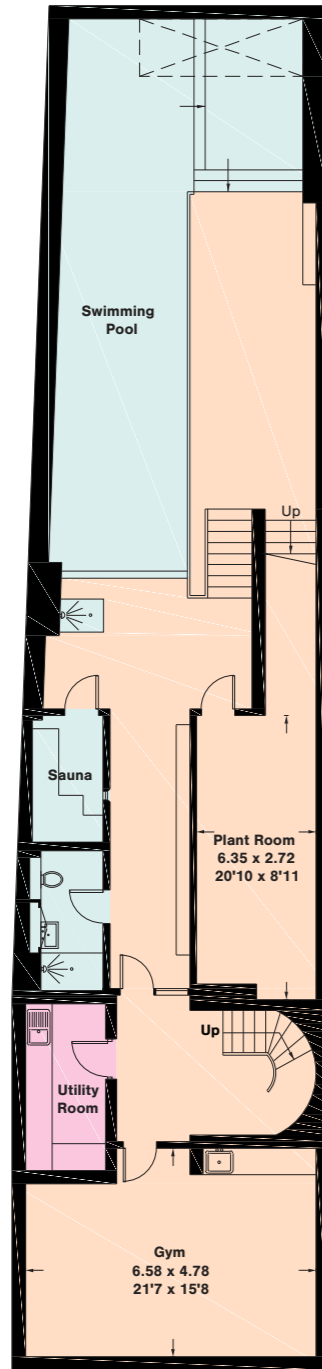




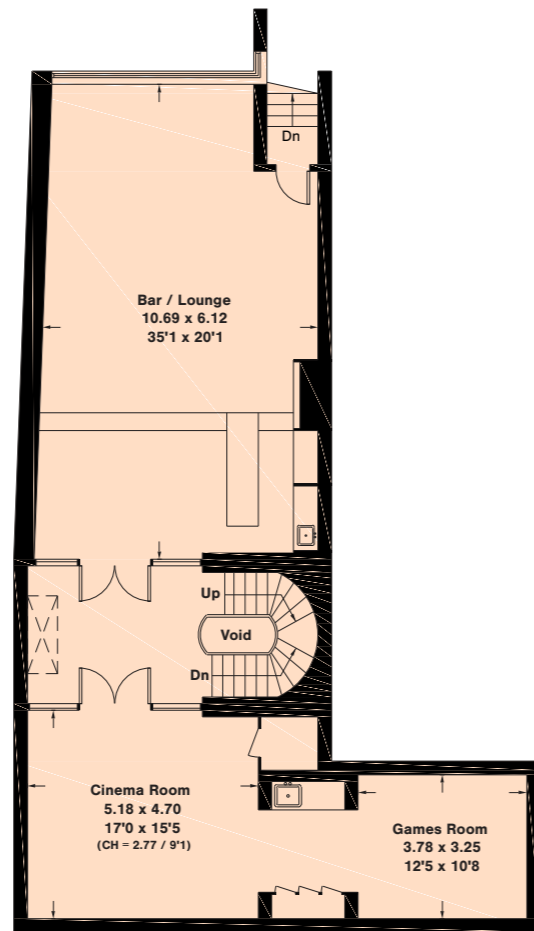


# FLOORPLAN

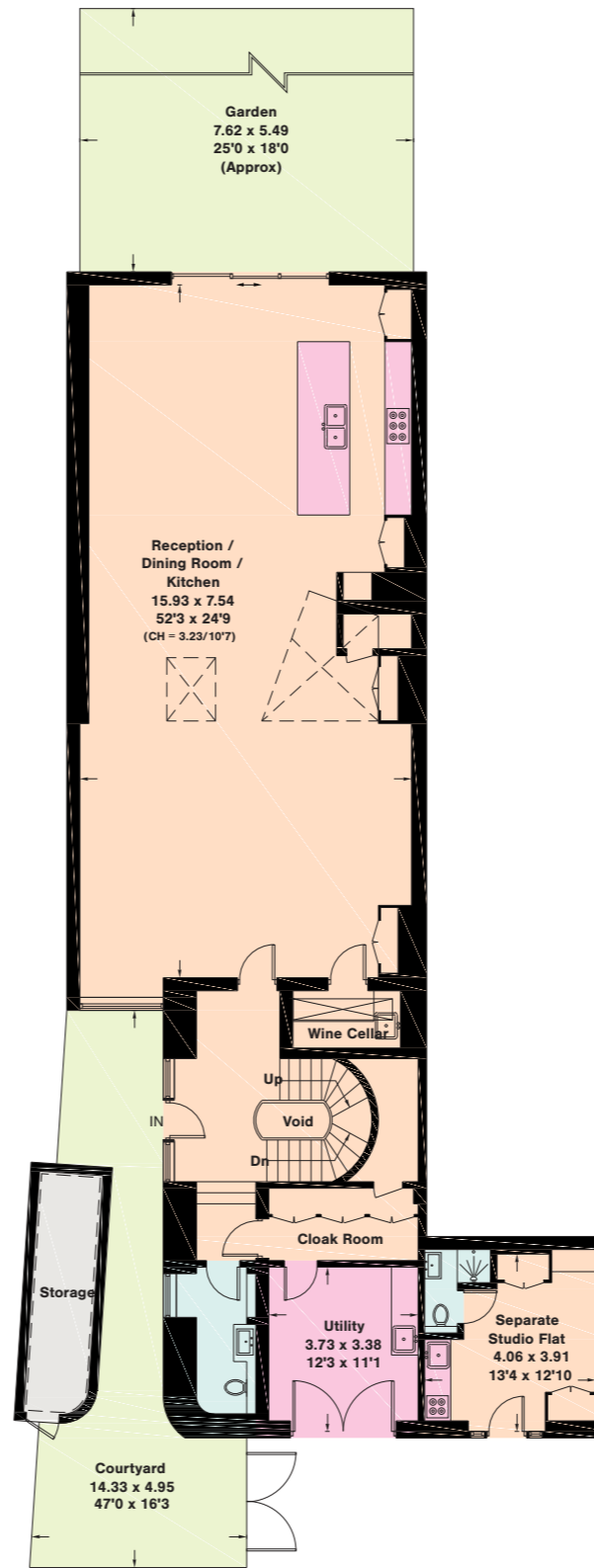
Approximate Gross Internal Area  
754.1 sq m / 8,117sq ft



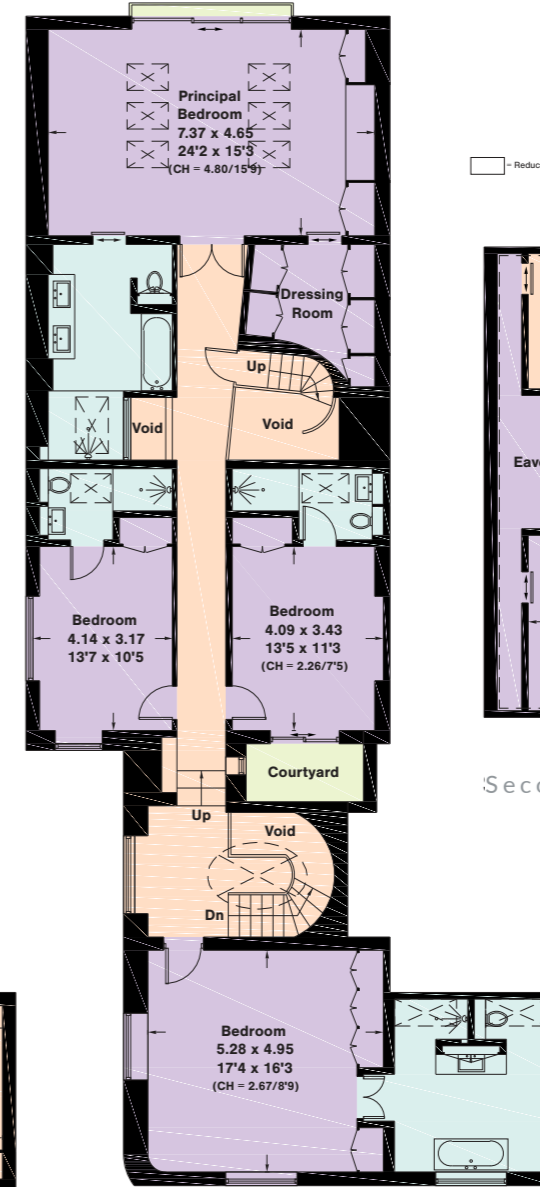
Basement



Lower Ground Floor

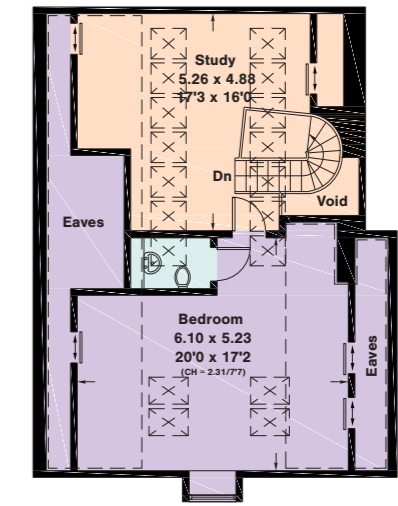


Ground Floor



First Floor

□ Reduced head height below 1.5m



Second Floor

# LOCATION



## TERMS

Viewing by appointment only with Beauchamp Estates  
Price: £30,000/week  
Leasehold



+44 (0)20 7499 7722  
londonlettings@beauchamp.com  
24 Curzon Street, London, W1J 7TF

Beauchamp Estates, their clients and any joint agents give notice that: 1. They are not authorised to make or give any representation or warranties in relation to the property either here or elsewhere, either on their own behalf or on behalf of their client or otherwise. They assume no responsibility for any statement that may be made in these particulars. These particulars do not form part of any offer or contract and must not be relied upon as statements or representations of fact. 2. Any Areas, measurements or distances are approximate. The text photographs and plans are for guidance only and are not necessarily comprehensive. It should not be assumed that the property has all necessary planning, building regulation or other consents and Beauchamp Estates have not tested any services, equipment or facilities. Purchasers must satisfy themselves by inspection or otherwise.

